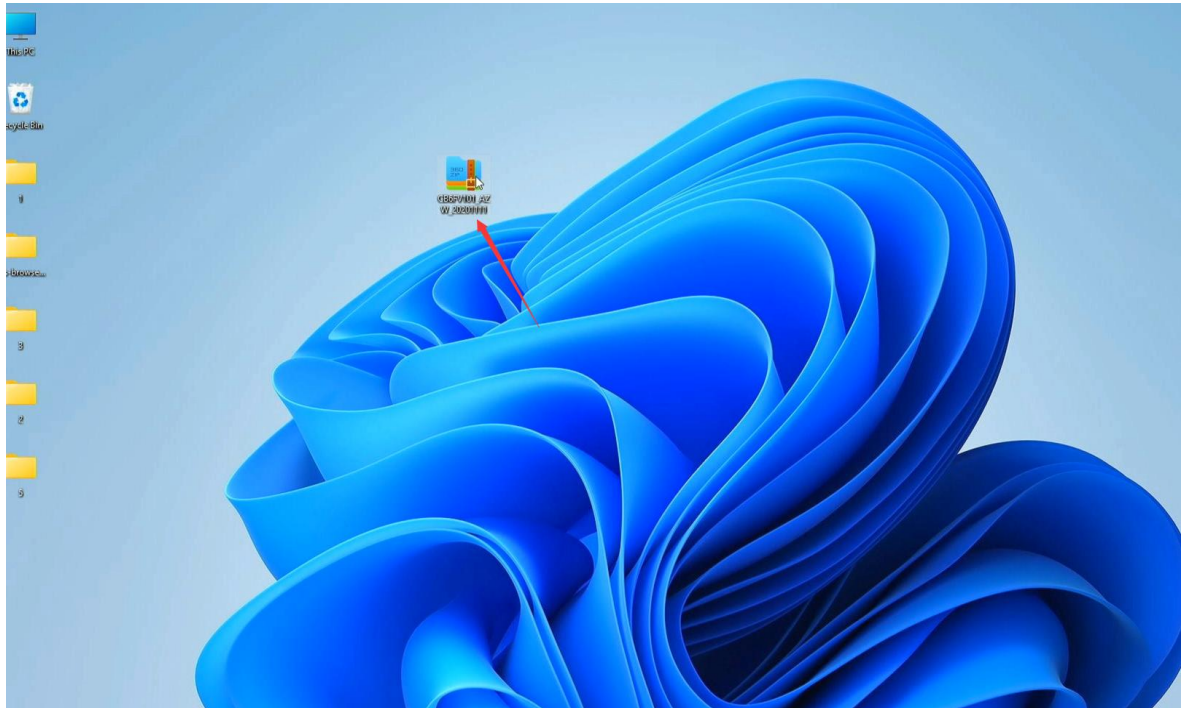
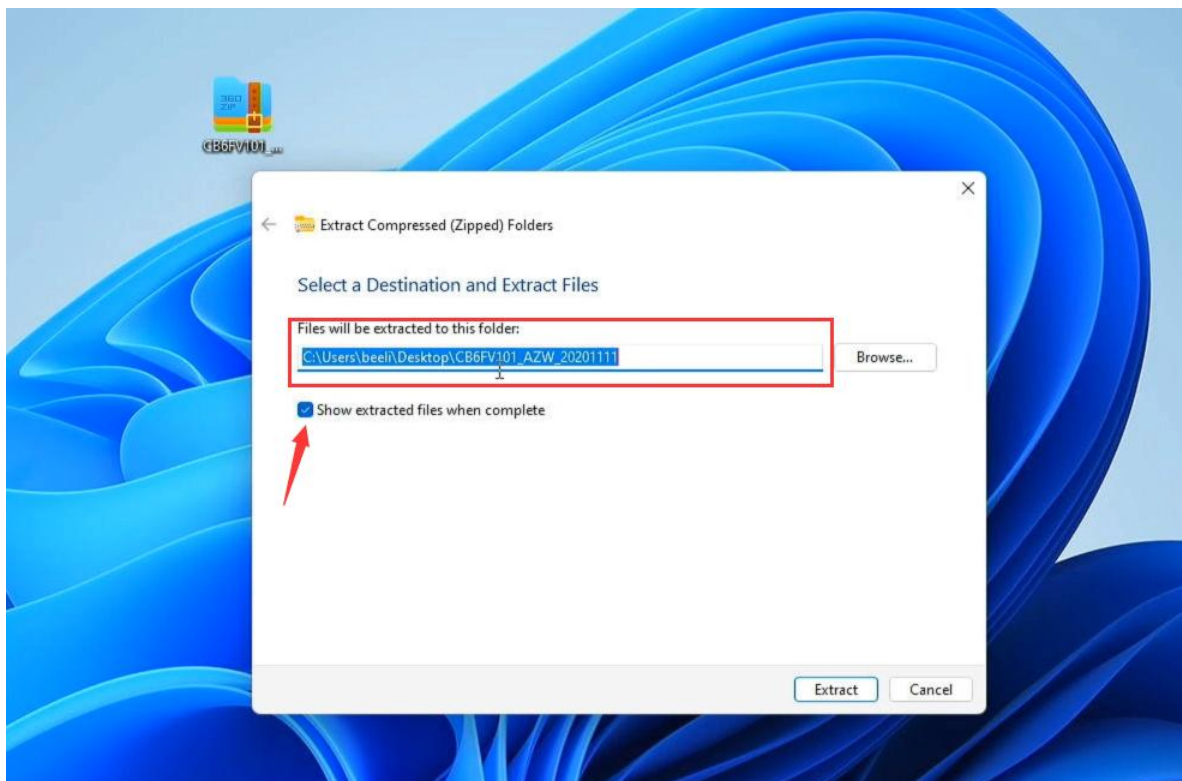


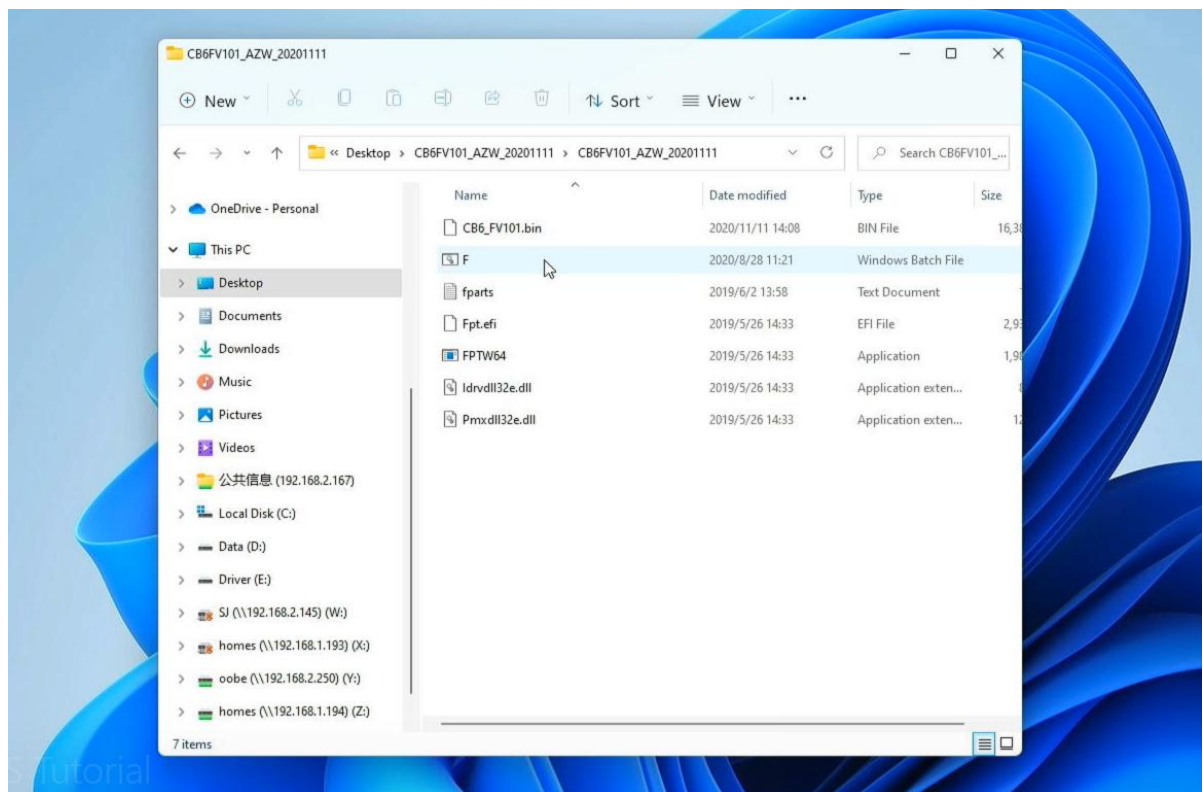
1.Prepare the bios files that need to be updated



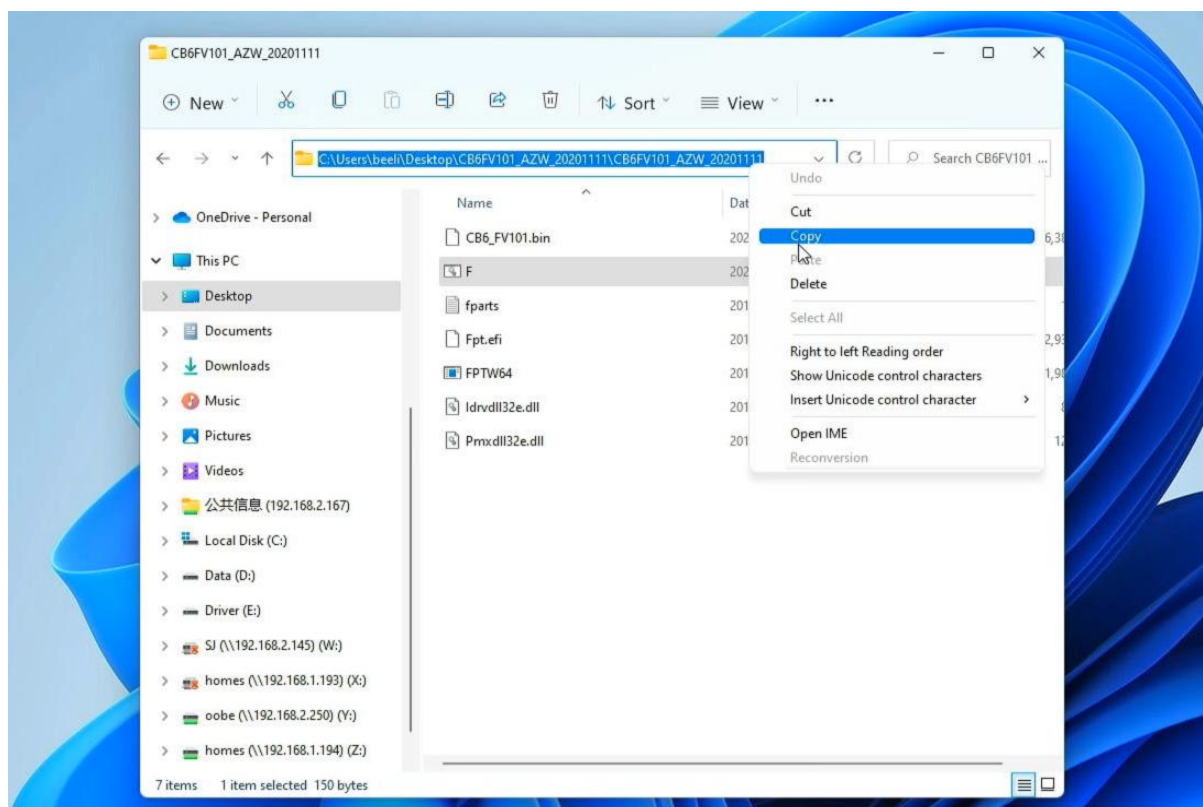
2. Extract the zip file to the desktop, the path indicated by the arrow in the figure below, and check “show extracted files when complete”



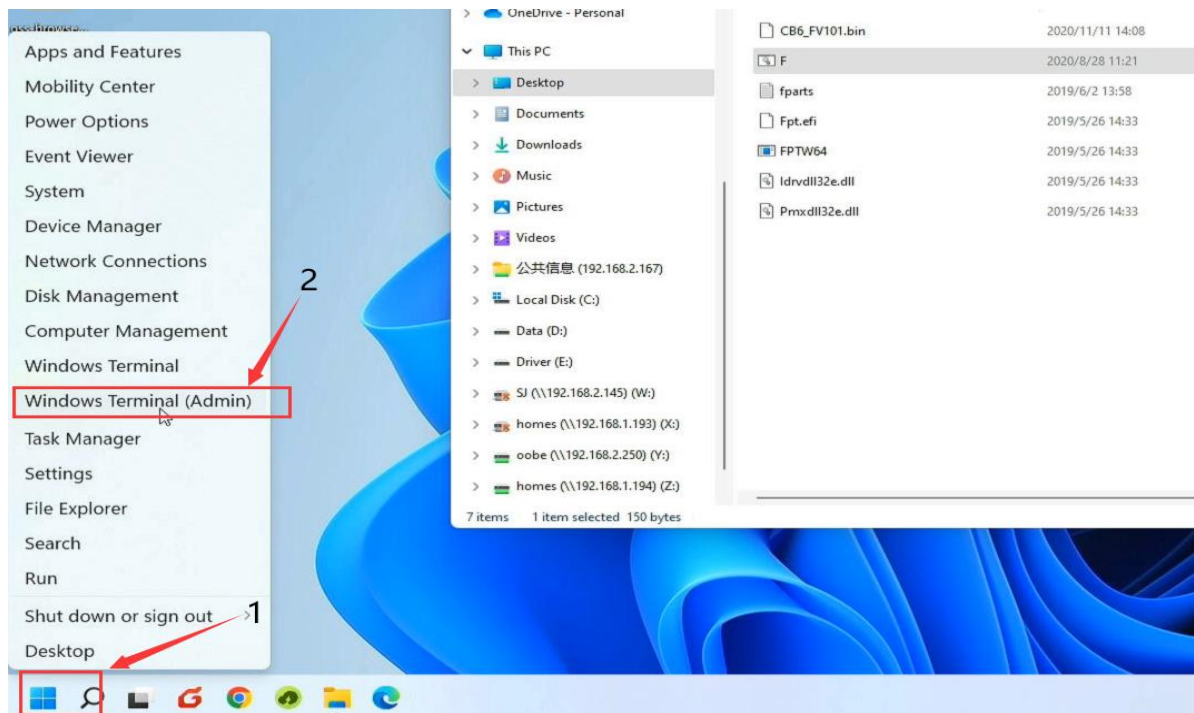
3. Open the files



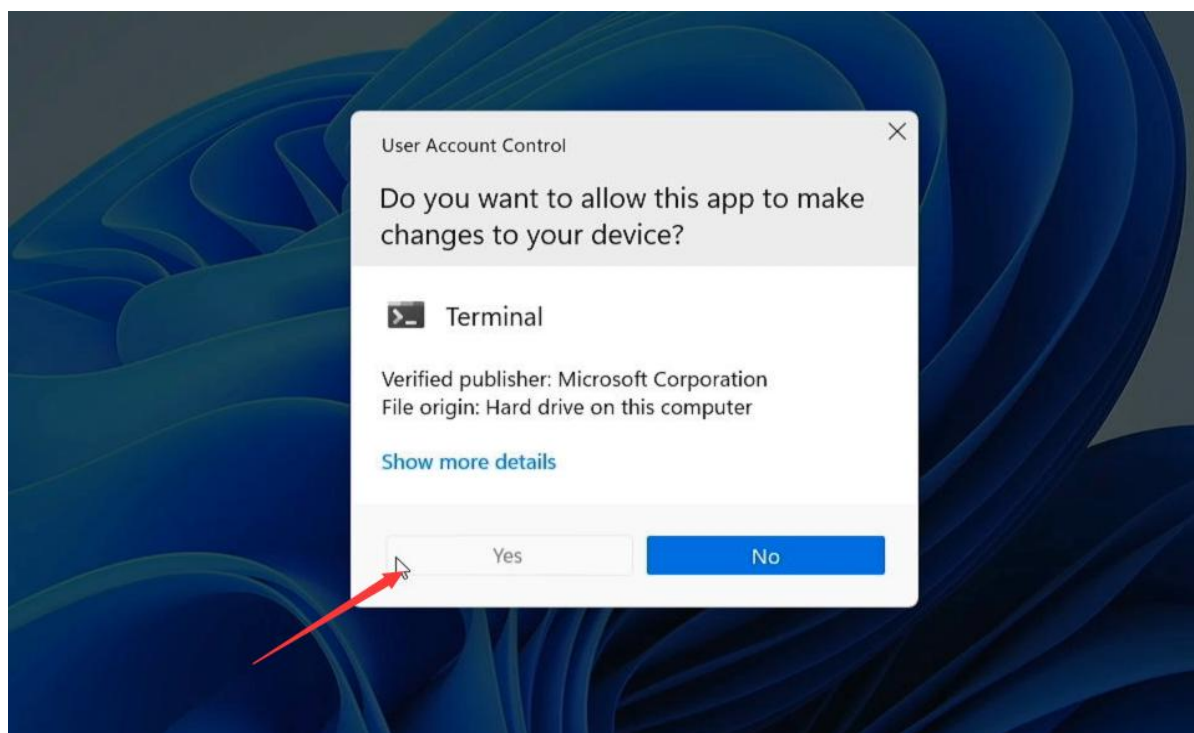
4. Select the address bar and copy the full name (ctrl+c <use keyboard>)



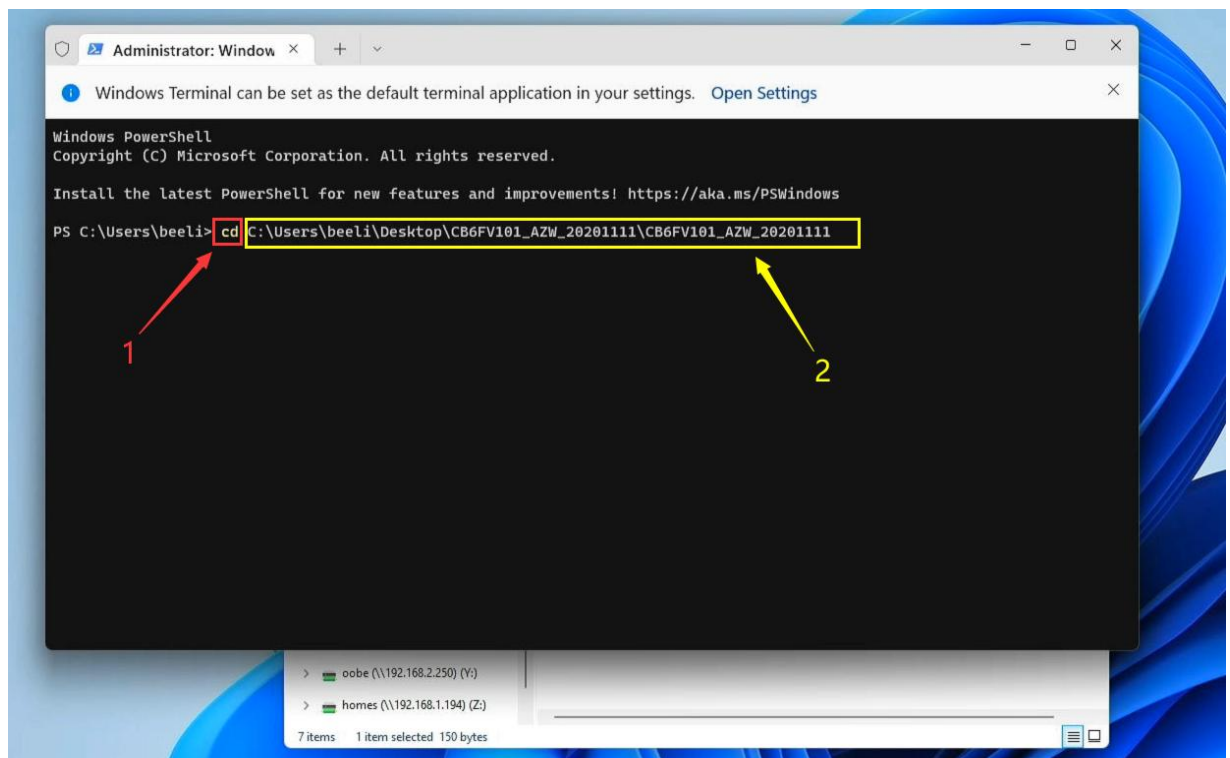
5.Right-click the Windows and select Windows Terminal (Admin) (1>2)



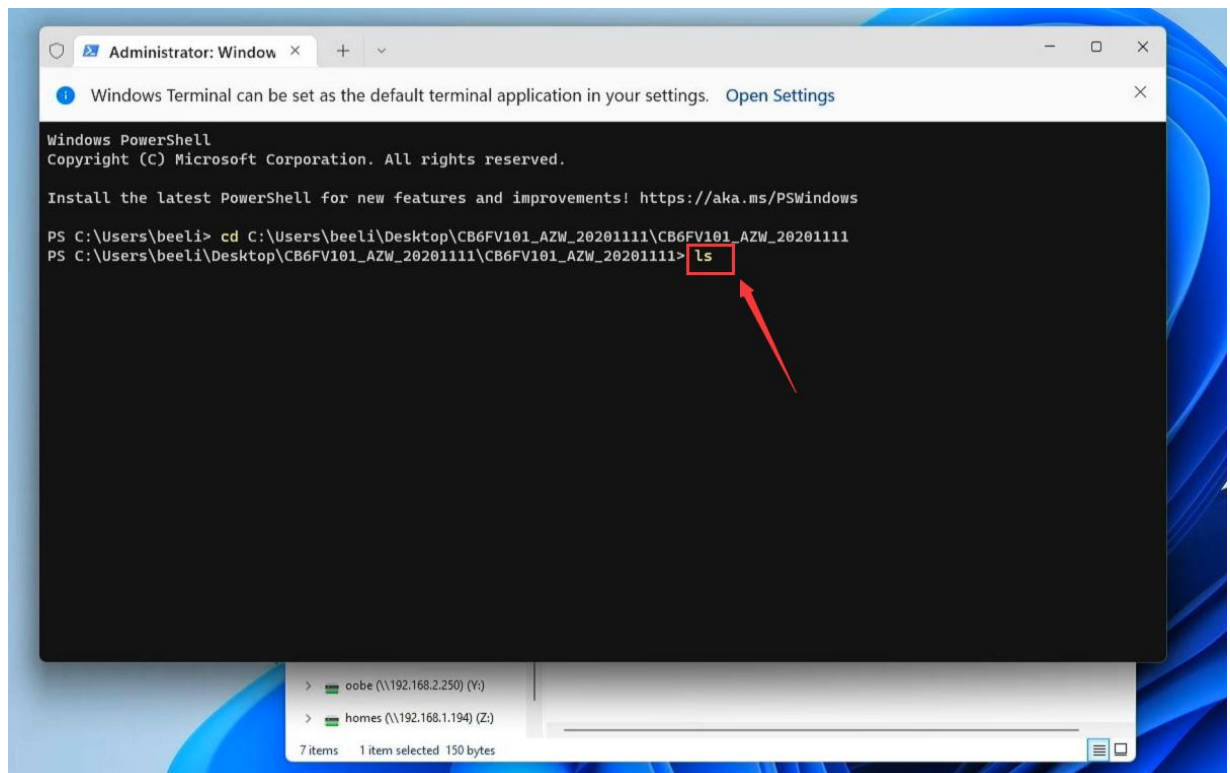
5.Click Yes



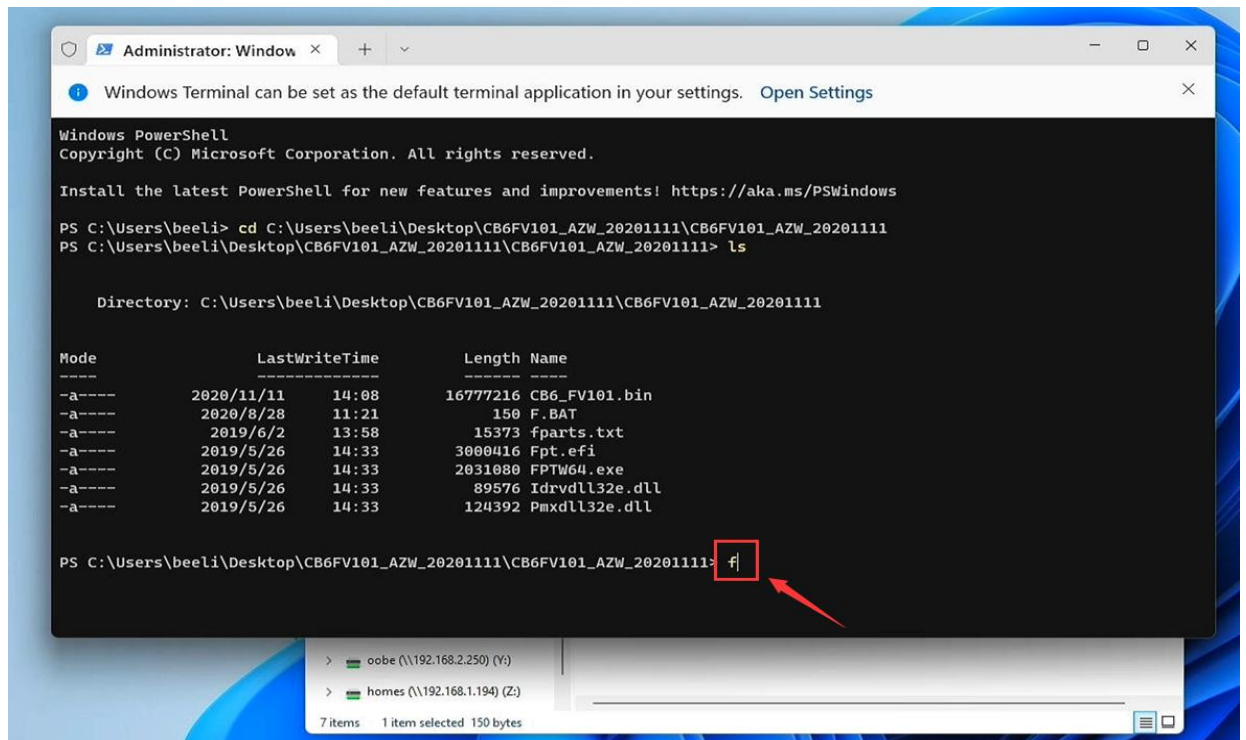
7.Type **CD** then paste the name of the file (ctrl+v) and press the Enter<use keyboard>.



8.Type **ls** and press the Enter.



8.Type **F** and press <Tab> then Enter <use keyboard>.



Administrator: Window

Windows Terminal can be set as the default terminal application in your settings. [Open Settings](#)

Windows PowerShell
Copyright (C) Microsoft Corporation. All rights reserved.

Install the latest PowerShell for new features and improvements! <https://aka.ms/PSWindows>

PS C:\Users\beeli> cd C:\Users\beeli\Desktop\CB6FV101_AZW_20201111\CB6FV101_AZW_20201111

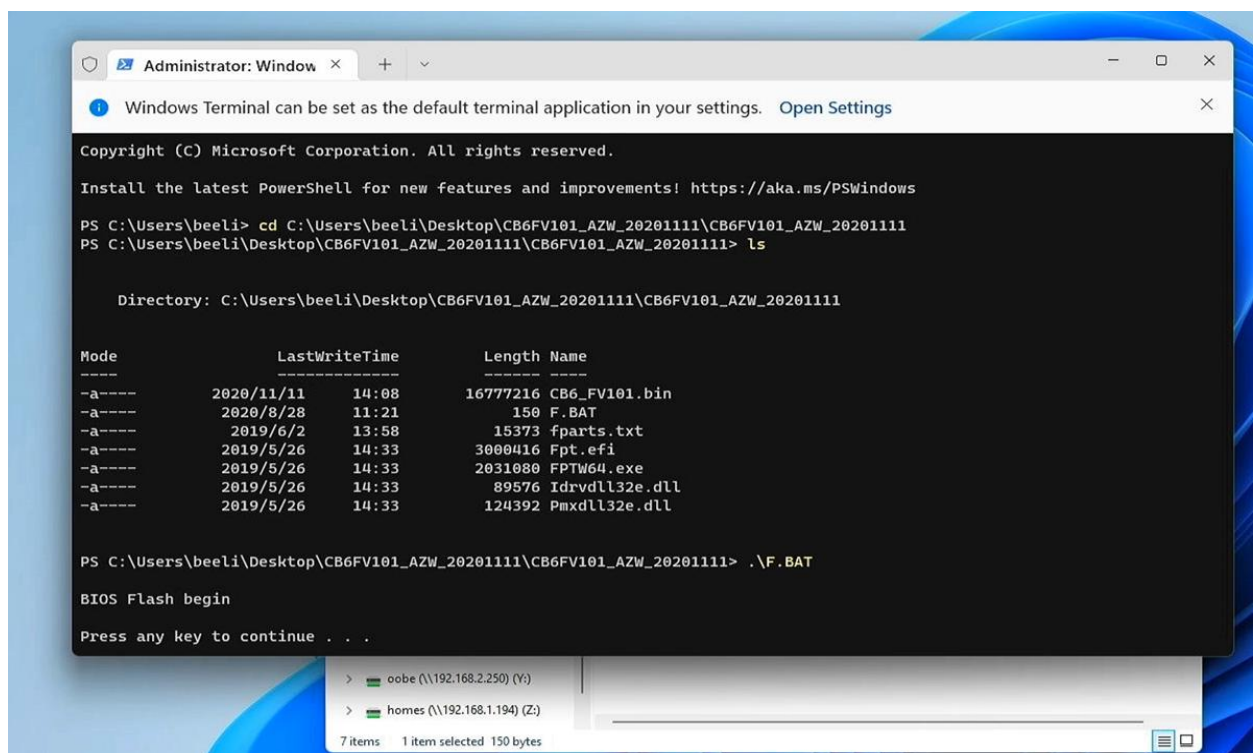
PS C:\Users\beeli\Desktop\CB6FV101_AZW_20201111\CB6FV101_AZW_20201111> ls

Directory: C:\Users\beeli\Desktop\CB6FV101_AZW_20201111\CB6FV101_AZW_20201111

Mode	LastWriteTime	Length	Name
-a----	2020/11/11 14:08	16777216	CB6_FV101.bin
-a----	2020/8/28 11:21	150	F.BAT
-a----	2019/6/2 13:58	15373	fparts.txt
-a----	2019/5/26 14:33	3000416	Fpt.efi
-a----	2019/5/26 14:33	2031080	FPTW64.exe
-a----	2019/5/26 14:33	89576	Idrvdll32e.dll
-a----	2019/5/26 14:33	124392	Pmxdll32e.dll

PS C:\Users\beeli\Desktop\CB6FV101_AZW_20201111\CB6FV101_AZW_20201111> f

9.The system will enter the Bios update process, press any key to start



Administrator: Window

Windows Terminal can be set as the default terminal application in your settings. [Open Settings](#)

Copyright (C) Microsoft Corporation. All rights reserved.

Install the latest PowerShell for new features and improvements! <https://aka.ms/PSWindows>

PS C:\Users\beeli> cd C:\Users\beeli\Desktop\CB6FV101_AZW_20201111\CB6FV101_AZW_20201111

PS C:\Users\beeli\Desktop\CB6FV101_AZW_20201111\CB6FV101_AZW_20201111> ls

Directory: C:\Users\beeli\Desktop\CB6FV101_AZW_20201111\CB6FV101_AZW_20201111

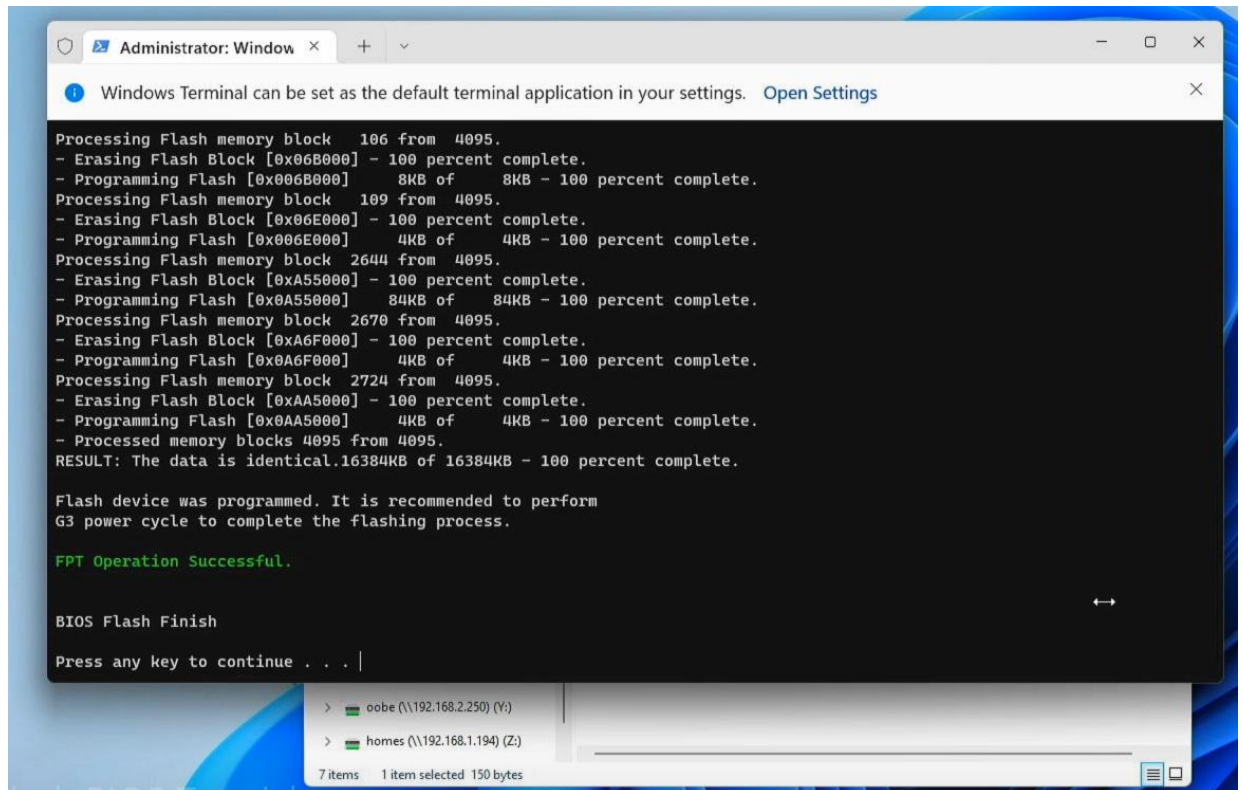
Mode	LastWriteTime	Length	Name
-a----	2020/11/11 14:08	16777216	CB6_FV101.bin
-a----	2020/8/28 11:21	150	F.BAT
-a----	2019/6/2 13:58	15373	fparts.txt
-a----	2019/5/26 14:33	3000416	Fpt.efi
-a----	2019/5/26 14:33	2031080	FPTW64.exe
-a----	2019/5/26 14:33	89576	Idrvdll32e.dll
-a----	2019/5/26 14:33	124392	Pmxdll32e.dll

PS C:\Users\beeli\Desktop\CB6FV101_AZW_20201111\CB6FV101_AZW_20201111> .\F.BAT

BIOS Flash begin

Press any key to continue . . .

10. When the green font of FPT Operation successful appears, the program can be closed and the Bios update is complete.



The screenshot shows a Windows Terminal window titled "Administrator: Window". A notification bar at the top states "Windows Terminal can be set as the default terminal application in your settings. Open Settings". The terminal output displays the progress of a BIOS update, including erasing and programming flash blocks. The final status is "FPT Operation Successful." in green text, followed by "BIOS Flash Finish" and a prompt to "Press any key to continue". Below the terminal window, a file explorer bar shows the "oobe" directory selected, with 7 items, 1 item selected, and 150 bytes.

```
Processing Flash memory block 106 from 4095.
- Erasing Flash Block [0x06B000] - 100 percent complete.
- Programming Flash [0x06B000] 8KB of 8KB - 100 percent complete.
Processing Flash memory block 109 from 4095.
- Erasing Flash Block [0x06E000] - 100 percent complete.
- Programming Flash [0x06E000] 4KB of 4KB - 100 percent complete.
Processing Flash memory block 2644 from 4095.
- Erasing Flash Block [0xA55000] - 100 percent complete.
- Programming Flash [0xA55000] 84KB of 84KB - 100 percent complete.
Processing Flash memory block 2670 from 4095.
- Erasing Flash Block [0xA6F000] - 100 percent complete.
- Programming Flash [0xA6F000] 4KB of 4KB - 100 percent complete.
Processing Flash memory block 2724 from 4095.
- Erasing Flash Block [0xAA5000] - 100 percent complete.
- Programming Flash [0xAA5000] 4KB of 4KB - 100 percent complete.
- Processed memory blocks 4095 from 4095.
RESULT: The data is identical.16384KB of 16384KB - 100 percent complete.

Flash device was programmed. It is recommended to perform
G3 power cycle to complete the flashing process.

FPT Operation Successful.

BIOS Flash Finish

Press any key to continue . . . |
```

> oobe (\\192.168.2.250) (Y:)
> homes (\\192.168.1.194) (Z:)

7 items 1 item selected 150 bytes